

Agenda

1. Basics
2. Membership
3. Q&A

The Basics

Basics

The sugar water lawsuit



The sugar water lawsuit

Rights based on the sugar water lawsuit that apply to this day:

- Creators must be asked for permission prior to each use of their works.
 - **This is simplified through GEMA by offering licences for music users.**
- Creators must be paid/remunerated for the uses of their works.
 - **GEMA takes care of adequate payment and enables straightforward exploitations through licence agreements.**
- Copyright is applicable during the lifetime of the creators plus an additional 70 years after their deaths.
 - **Legal successors are also supported by GEMA in their matters.**



The copyright act

- 1 | “Copyright protects the author in his or her intellectual and **personal relationships to the work** and in respect of the use of the work. It also serves to ensure **equitable remuneration** for the use of the work.” (§ 11 UrhG)
- 2 | “Only **the author’s own intellectual creations** constitute works within the meaning of this Act.” (§ 2 UrhG)
- 3 | „The author has the **exclusive right to exploit** his or her work in **material form**“ and „the exclusive right to communicate his or her work to the public in **non-material form**“. (§15 UrhG)
- 4 | “**Adaptations** or other transformations of a work, including, in particular, of a melody, may be published or exploited **only with the author’s consent**.” (§23 UrhG)
- 5 | “Copyright expires **70 years** after the author’s death.” (§64 UrhG)

What is GEMA actually?

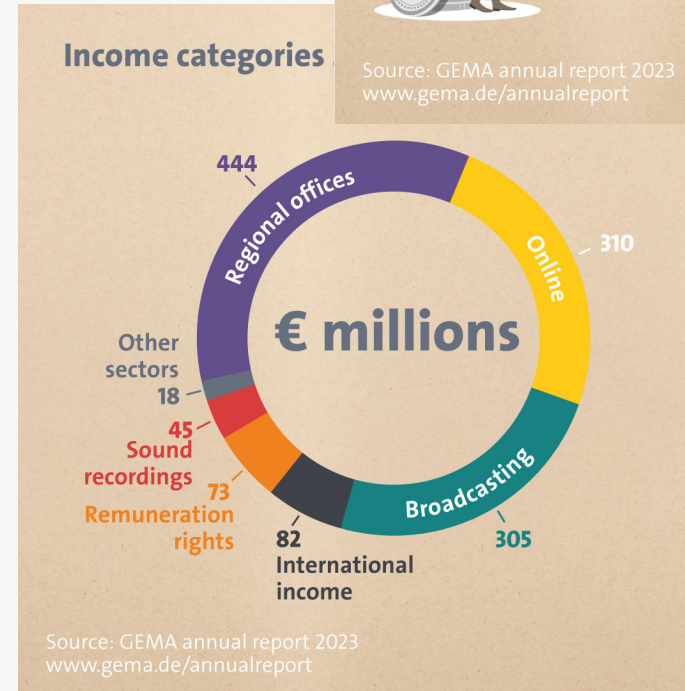
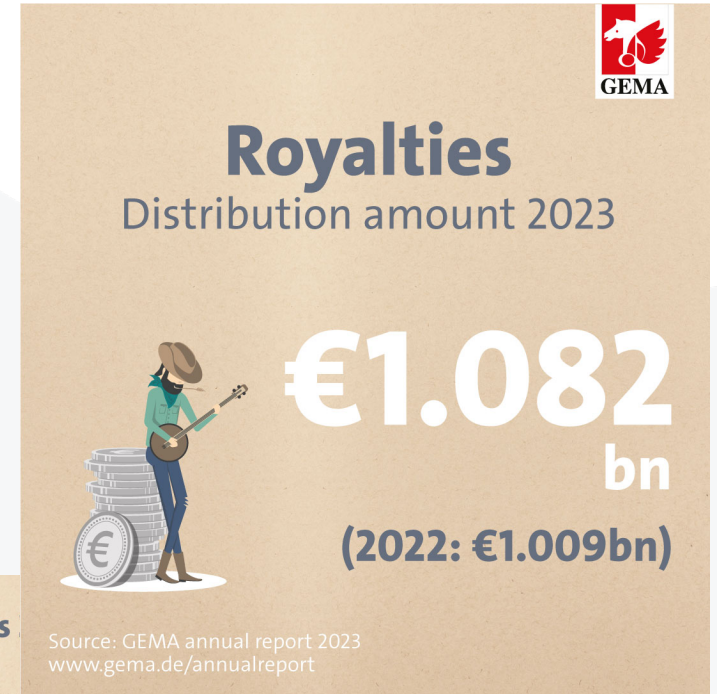
- **GEMA** stands for:
Gesellschaft für **m**usikalische **A**ufführungs- und mechanische Vervielfältigungsrechte
- GEMA is a musical collective management organisation and has the legal form of a commercial association (s.22 BGB)
- GEMA **must not make any profits**
- The purpose of the association is to manage the copyrights of its members in a fiduciary capacity as a trustee and to exploit their rights vis-à-vis the licensees



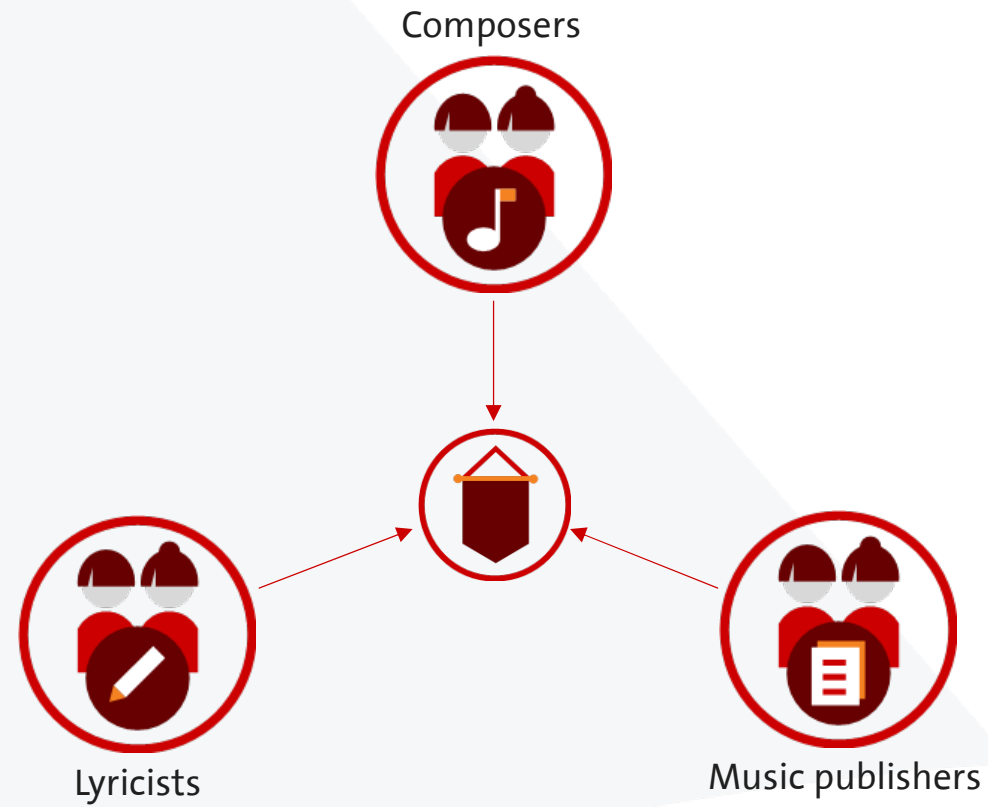
Facts and figures

- Over **100.000 members**
- Approx. **50m documented works**** worldwide
- Represents more than **3m rightsholders**** throughout the world
- Average distribution amount per year: **over 1 billion euros***
- Processes approx. **1,5 petabytes** (1,5 million gigabytes)***
- Locations: Berlin, Munich, Hamburg, Dresden, Nuremberg, Stuttgart
- Approx. 600 employees

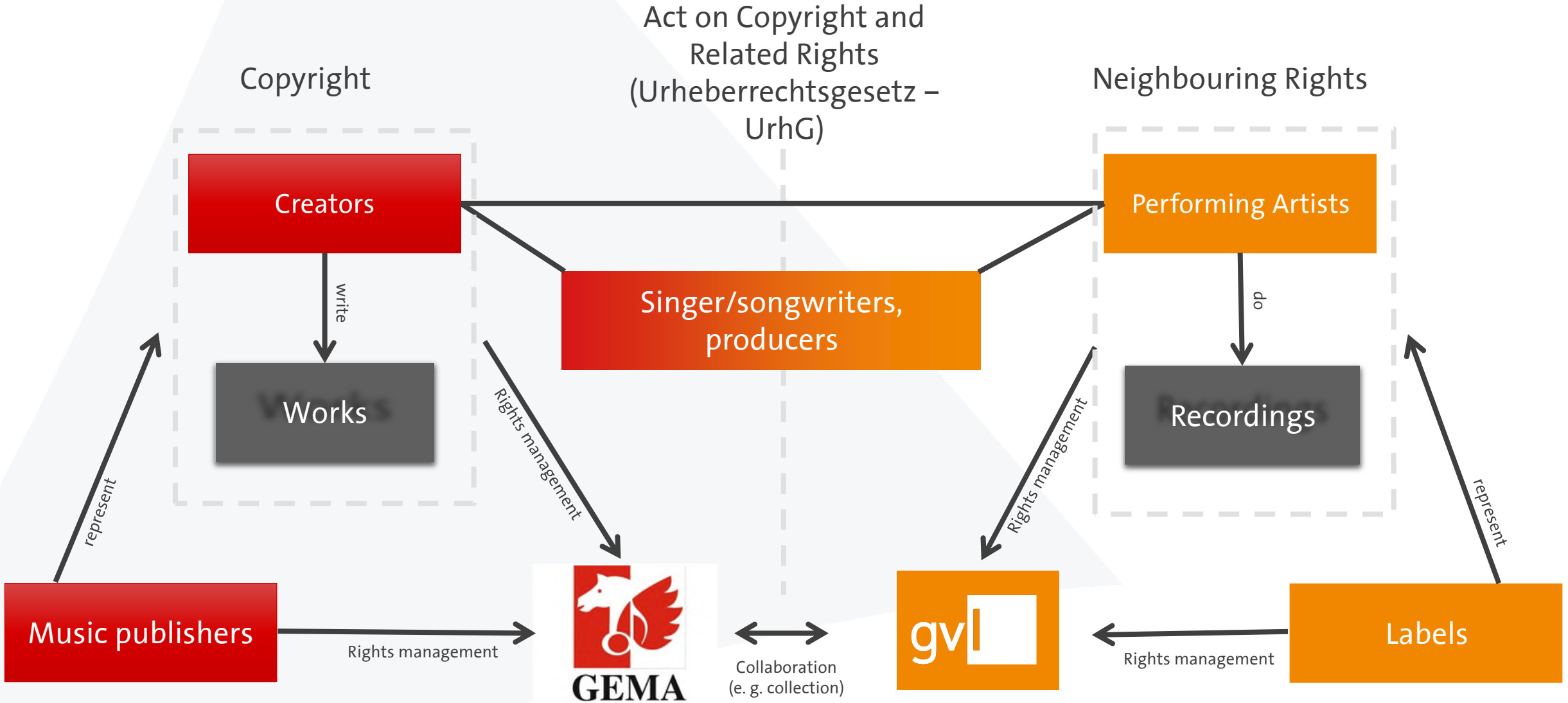
**All figures rounded. As of Dec 2025



Our members



GEMA & GVL – Who does what?



GEMA, GVL & GEZ (TV licence)



GEMA

- manages exploitation rights (copyright)
- of composers, lyricists and music publishers
- collective management organisation



GVL

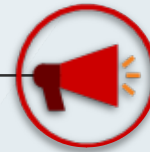
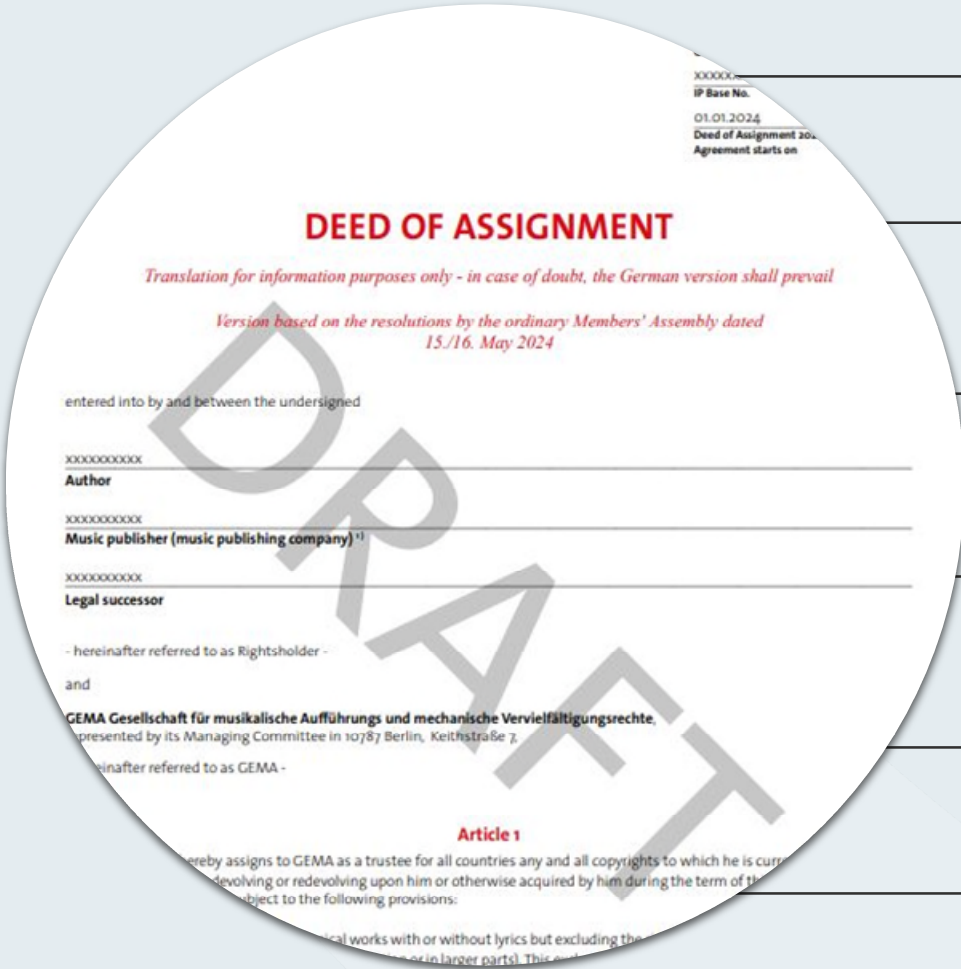
- manages neighbouring rights
- of performing artists and labels
- collective management organisation



**ARD ZDF Deutschlandradio
Beitragsservice**
(formerly: GEZ, „TV licence in Germany for each household“)

- collects the TV licence contribution of German households and passes it on to the public service broadcasters
- shared institution, run by public service broadcasters

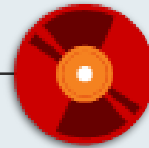
Deed of Assignment



Performing Rights (Live)



Broadcasting rights for radio and TV



Mechanical reproduction rights and distribution rights for audio, audiovisual and multimedia carriers



Communication to the public rights for radio and TV broadcasts

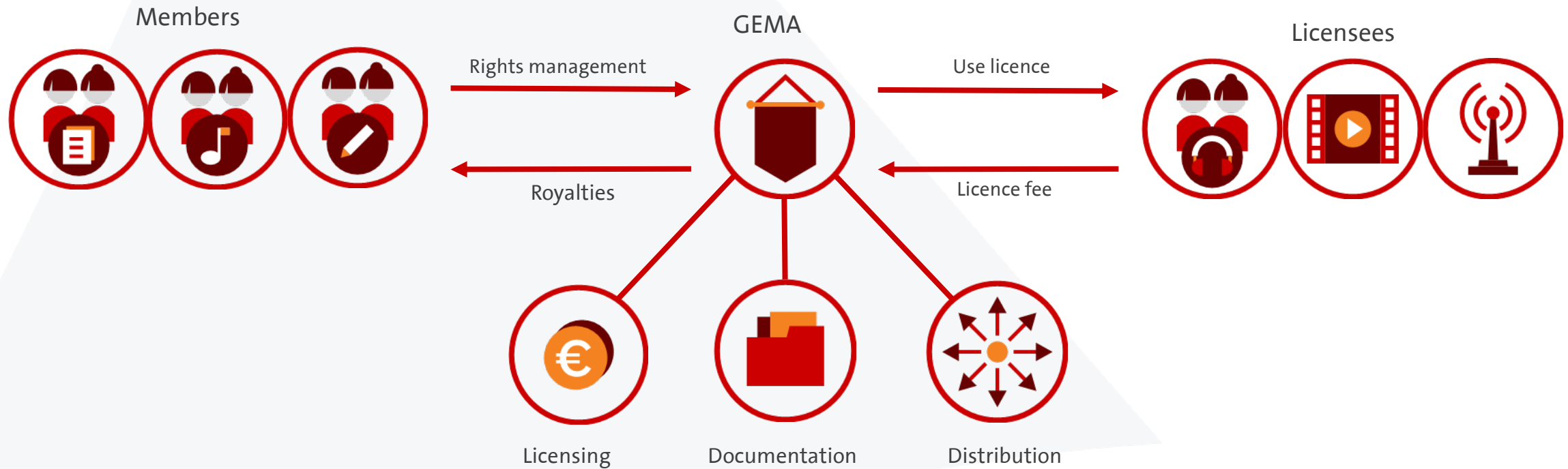


Making available rights i.e. make music available on the internet

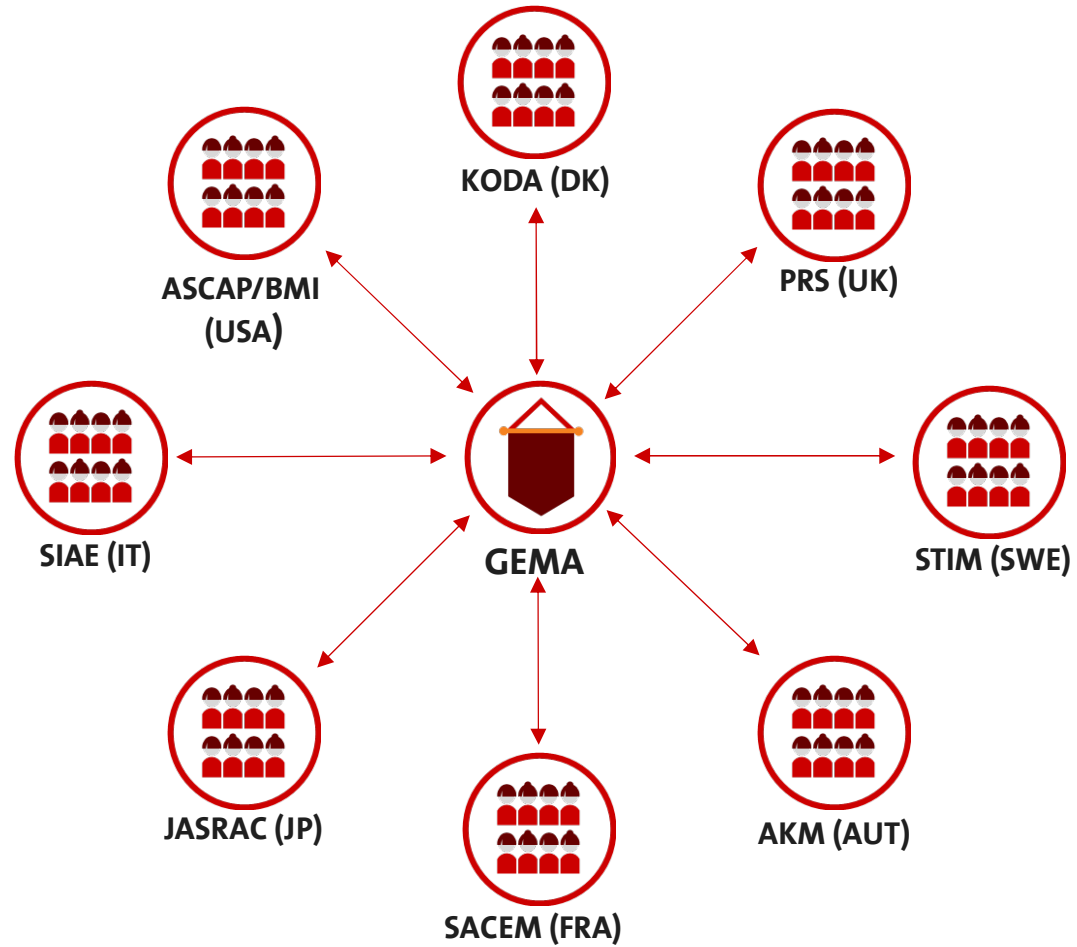


(...)

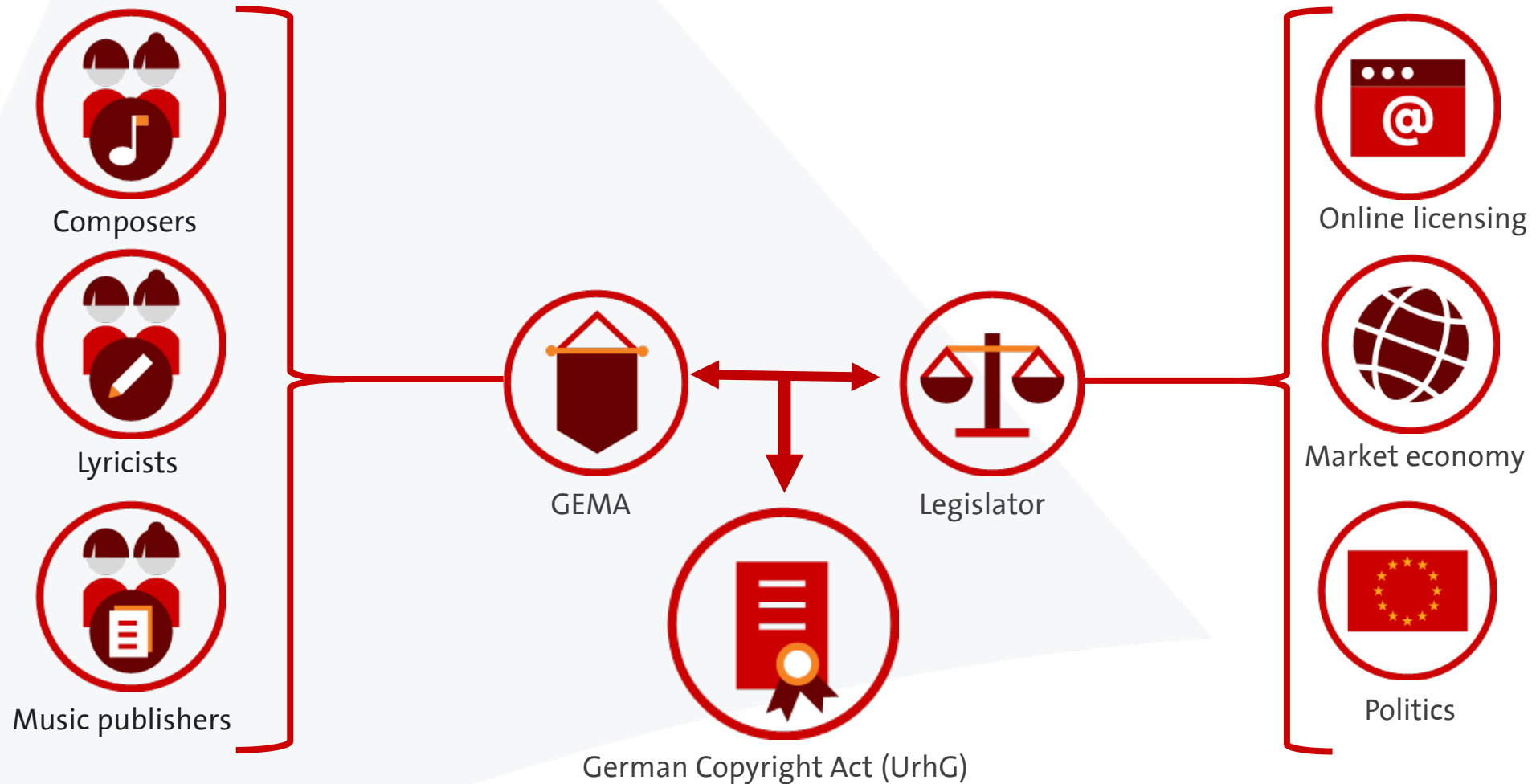
Rights management



Rights management



Representation of interests



Governing bodies of the association



GENERAL ASSEMBLY



SUPERVISORY BOARD



MANAGING COMMITTEE

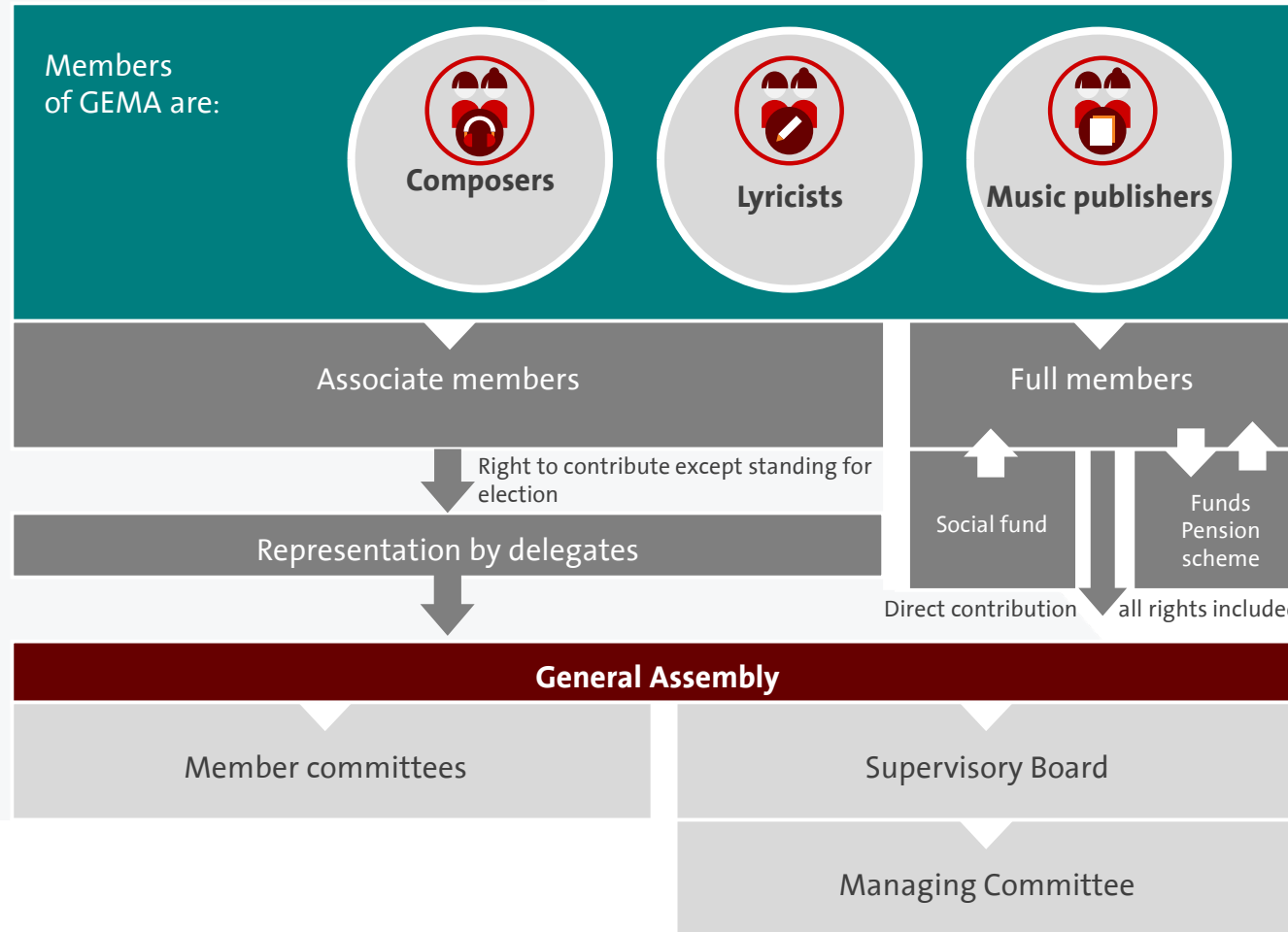
Setup and structure of GEMA

The type of membership has no influence on how the rights are managed or how the royalties are distributed

GEMA supervisory authorities

German Patent and Trademark Office

Cartel Office



Membership

Associate and full membership



Associate membership

Approx. 96.000 members

No special requirements

No contract with a label or music publisher necessary

Ordentliches Mitglied

Sozialkasse

Full membership

Approx. 5.000 Members

Requirements: Number of works, membership duration, minimum turnover

Direct and full contribution at the General Assembly

Membership

Online Portal

Many GEMA online services are accessible via the [Online Portal](#):

- My messages
- My details
- My royalties
- My setlists
- Work declaration
- Soundfile upload
- ...


The screenshot displays the GEMA Online Portal interface. On the left is a dark sidebar menu with the following sections:


- GEMA ONLINE PORTAL** (with logo)
- User profile: Member
- MENU**
 - Dashboard
 - My area
 - Services
- ACCOUNT**
 - Member number: [redacted]
 - BPID: [redacted]
- GEMA.DE**
 - To GEMA website
- Footer: Data protection // Legal notice // Terms of Service © 2024 GEMA

The main content area features:




- Top right: Help & contact (EN), notification bell, and refresh icon.
- Header: Welcome, MEMBER (with profile picture and name).
- Warning banner: **Wartungshinweis:** Unser Onlineportal ist vom 25. Oktober, 16:00 Uhr bis 27. Oktober, 15:00 Uhr wegen Wartungsarbeiten nicht verfügbar. Wir bitten um Ihr Verständnis.
- Overview** section with two cards:
 - Next distribution date on **01/12/2024**
 - This is how many unread messages are in your inbox: **7**
- Recommended features** section with a card for **Work declaration** (Register your works at GEMA).
- News in the online portal** section with a card for **Reform Live** and an [All news](#) link.

Online Portal

 **GEMA ONLINE PORTAL**

 Member

MENU


-  Dashboard
-  **My area**
-  Services

ACCOUNT

Member number:


BPID:

GEMA.DE

 To GEMA website

Data protection //
Legal notice // Terms of Service
© 2024 GEMA



Help & contact  EN  

My area



My details

View and amend your personal account details



My financial details

Account statements, turnover, status report and more



My royalties

Details on the revenue generated by your works



My communication

Your GEMA correspondence, all in one place



My repertoire

Your registered works and AV productions



My Setlists

Submit playlists for live events in Germany and abroad



My downloads

Download requested or available documents



My portal access permissions

Overview of received and assigned authorisations /documentation sections



My sub-publishing agreements

View your existing sub-publishing agreements, let them expire or notify us of new sub-



My social fund

Your documents for the social fund

Membership

Online Portal



Work declaration

Register your works online.

**No works registered,
no royalties!**



My details

Keep your address, contact details, bank details and tax data up to date and much more.



My financial details

Account transactions, account statements, analyses and more.

Online Portal



My messages

Manage your correspondence with us in one place.



Soundfile Upload

Upload audio files and release them for music use monitoring.



My setlists

Submit setlists for live events in Germany and abroad.

Membership

GEMApplus benefits program



Workshops & webinars

Expand your know-how about GEMA and many other music topics.

Showcases

Perform at popular festivals and major events in order to attract new fans.

Partner offers

Make use of exclusive offers around music creation; they will support you in your daily life and your career.

Insurances

Benefit from exclusive, sector-specific and tailored insurances

All benefits



Become a member – Is it worth it?

How often is your music used per annum?



[Check now](#)



Questions & Answers