



# GEMA CONNECTS

# GEMA CONNECTS MUSIC AUTHORS AND MUSIC USERS

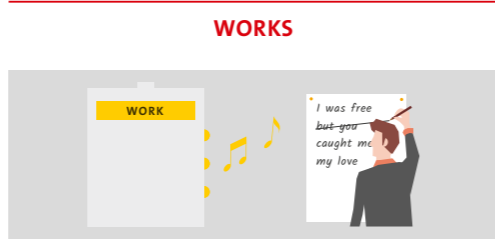
GEMA has an important function for the music market in Germany – as a fiduciary and representative of creatives’ interests, as well as a licensor and provider of services to music users.



**Music authors** are composers and lyricists. **Music publishers** advise composers and lyricists as partners and look after the marketing of their musical works. That way, they mediate the rights for the use of music titles to radio, film, broadcasters, agencies and performers or distribute music score, especially in the ‘serious music’ category.



Music authors and music publishers who assign their musical works to GEMA are **GEMA members**. At the moment, GEMA has more than 70,000 members.



**Works** – compositions, lyrics and arrangement which members have registered with GEMA and thus assigned to it for administration purposes – are the intellectual property of its authors (composers and lyricists) and protected by copyright. For the public use of such works, a usage or exploitation right must be acquired (licence).



Music authors and music publishers who are GEMA members assign **their rights** for the fiduciary **administration** to their association – GEMA – and thus free up space for their creative work. It is the statutory purpose of GEMA to administer the rights of its members and to support the appreciation of the value of their work.



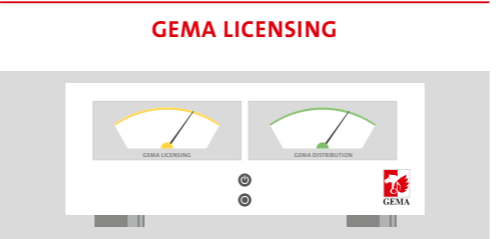
GEMA’s **documentation** processes all relevant pieces of information on members and their works. By means of this comprehensive database, the rightsholders for each usage of a work can be allocated accordingly. The entirety of works collated by GEMA are also referred to as **GEMA Repertoire**.



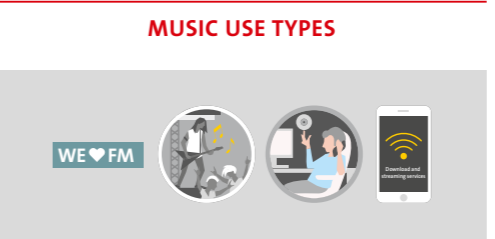
Together with the repertoires of the **international collective management organisations** with whom GEMA has representation agreements, GEMA puts the **global music repertoire** at its customers’ fingertips. GEMA thus represents two million musical works and is one of the biggest collective management organisations for musical works in the world.



GEMA negotiates adequate **tariffs** for broadcasting, performances, reproduction and online usage of music with **trade and sector associations**. Based on these tariffs, GEMA calculates the costs for the different kinds of public music use. As a collective management organisation, it is bound by law to do so.

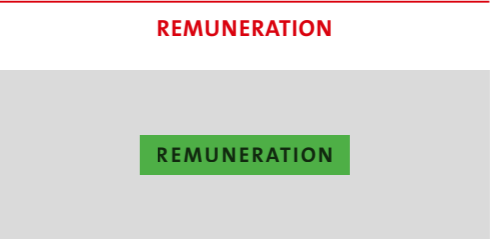


Music users – event organisers, associations, broadcasters, online platforms, record producers and others – enjoy a swift and simple access to the global music repertoire and the respective exploitation rights via the **GEMA licensing** process. Licensing is comfortable and swift – either online or via GEMA’s customer service.



Music is publicly used in many different ways: in discos and restaurants, at events and concerts, in dance halls, at film screenings, on the radio and on TV. In relation to the usage types, GEMA also differentiates between background music such as you would find in a shop or a restaurant, for example, and music in telephone loops or on websites.

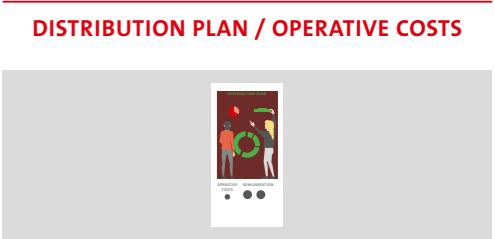
- The most important **music use types** are:
- Broadcast (TV, radio etc.)
  - Performance (concerts, events)
  - Reproduction (vinyl, CD, DVD, USB etc.)
  - Online (downloads, streaming etc.)



GEMA collects income from the licences issued to music users and passes on the collections to the authors in the form of **remuneration** for the use of their works. The remuneration is paid out to GEMA members and international collective management organisations after a deduction of operative costs in the form of royalties.



In the Annual **General Assembly**, GEMA members pass resolutions relating to e.g. changes of the Statutes, the distribution plan and the membership agreement. There are also various kinds of elections, such as the election of the Supervisory Board of GEMA every three years.



GEMA members pass a detailed and elaborate **distribution plan** via resolution. In it, it is determined which remuneration share within a work use is due to each individual author or publisher.

GEMA is an economic association. It does not yield any profits but merely covers its **operative costs**.



The **distribution** of remuneration to **members** takes place on fixed pay-out dates. They are spread across the year in order to provide a regular stream of income to the authors entitled to receive payments. Pay-out dates at [www.gema.de](http://www.gema.de)

# CONTACTS AND ADDRESSES

Via the following link, GEMA provides a multitude of online services for music authors, publishers and music users – among others for repertoire search, a freely accessible music and information tool.

➔ [www.gema.de/en/online-services](http://www.gema.de/en/online-services)

## CONTACT FOR MUSIC AUTHORS (COMPOSERS, LYRICISTS) AND MUSIC PUBLISHERS

### Membership service

Monday–Thursday: 9.00–17.00

Friday: 9.00–16.00

T +49 30 21245-300

E [mitgliederservice@gema.de](mailto:mitgliederservice@gema.de)

### Royalty distribution domestic performances or broadcasts

T +49 30 21245-199

E [as-service@gema.de](mailto:as-service@gema.de)

### Royalty distribution mechanical reproduction rights, online and international income

T +49 89 48003-741

E [vra-service@gema.de](mailto:vra-service@gema.de)

## CONTACT FOR MUSIC USERS

### Notification of music performances and music playback (Events, gastronomy, retail, websites with background music etc.) customer centre

T +49 30 58858999

F +49 30 21292795

E [kontakt@gema.de](mailto:kontakt@gema.de)

### Notification of reproductions (sound recordings such as CDs, DVDs etc.)

T +49 89 48003-800

E [info-vr@gema.de](mailto:info-vr@gema.de)

### Notification of online music use

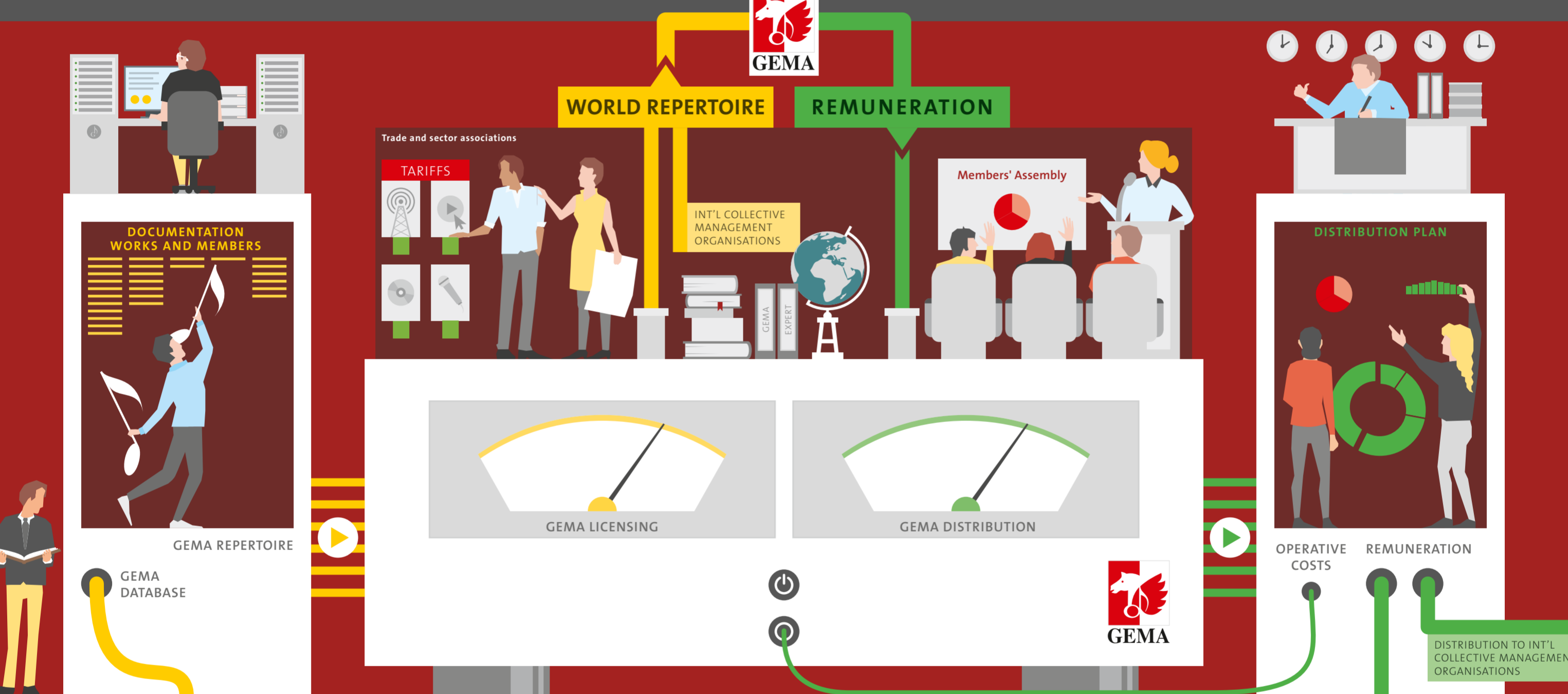
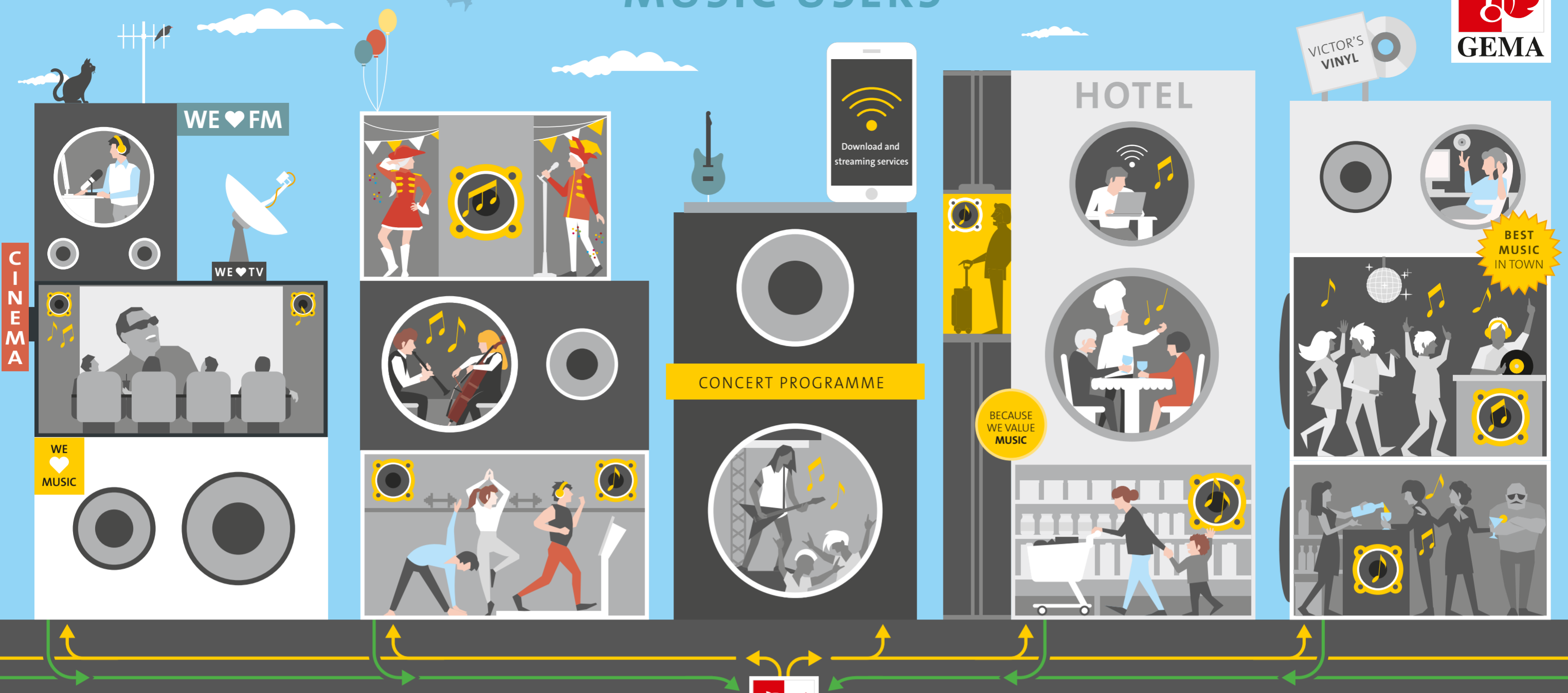
E [lizenziierung-online@gema.de](mailto:lizenziierung-online@gema.de)

### Notification of webradio and podcasts

E [webradio@gema.de](mailto:webradio@gema.de)

E [podcasting@gema.de](mailto:podcasting@gema.de)

# MUSIC USERS



# GEMA CONNECTS

RIGHTS ADMINISTRATION



DISTRIBUTION TO GEMA MEMBERS



# MUSIC AUTHORS AND PUBLISHERS

# BECAUSE WE VALUE MUSIC

## GEMA

Gesellschaft für musikalische Aufführungs- und  
mechanische Vervielfältigungsrechte

Bayreuther Straße 37  
D-10787 Berlin  
T +49 30 21245-00  
F +49 30 21245-950  
E [gema@gema.de](mailto:gema@gema.de)

Rosenheimer Straße 11  
D-81667 Munich  
T +49 89 48003-00  
F +49 89 48003-969  
E [gema@gema.de](mailto:gema@gema.de)

[www.gema.de](http://www.gema.de)